



Pump mounting plates for combustion engines

Pump mounting plates for combustion engines



Content

Product description	181
Dimensions	181

Pump mounting plates

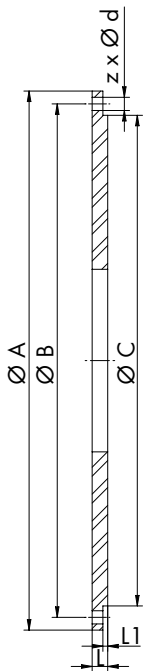
Product description

- Connecting element for mounting hydraulic pumps on combustion engines
- Sizes SAE 1-6 available
- Material: S 235 JR (1.0037)
- Coating on request



Order code pump mounting plates			
Type	Size		Pump face code
PMP	SAE 3	-	747/1

Dimensions



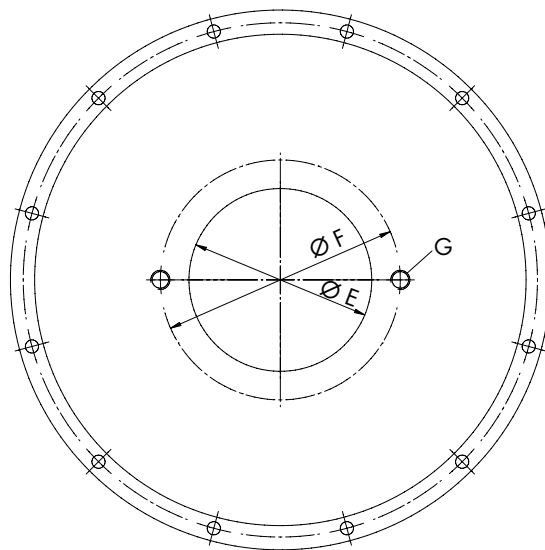
Housing size	Dimensions [mm]						
	Ø A	Ø B	Ø C	z	Ø d	L	L1
SAE 1	552.45	530.23	511.18	12	11	19.05	3.18
SAE 2	488.95	466.73	447.68	12	11	19.05	3.18
SAE 3	450.85	428.63	409.58	12	11	19.05 / 12.70	3.18
SAE 4	403.23	381.00	361.95	12	11	12.70	3.18
SAE 5	355.60	333.38	314.33	8	11	12.70	3.18
SAE 6	307.98	285.75	266.70	8	11	12.70	3.18

Pump mounting plates

Dimensions

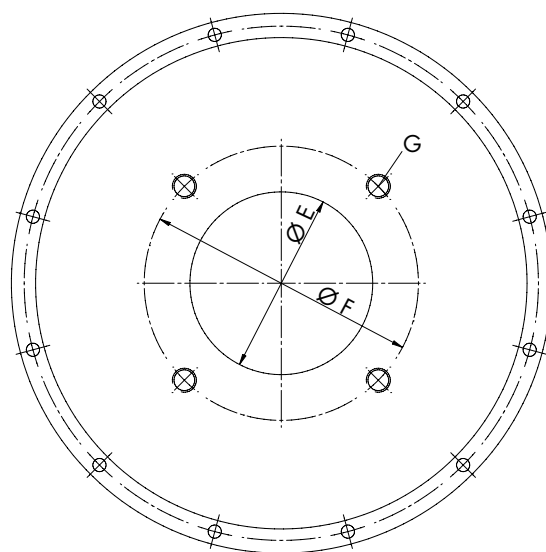
2 bolt flange

Flange size acc. to SAE	Dimensions [mm]		
	$\varnothing E$	$\varnothing F$	G
AA	50.80	82.55	5/16-18
AA	82.55	106.35	3/8-16
B	101.60	146.05	1/2-13
C	127.00	180.98	5/8-11
D	152.40	228.60	3/4-10
E	165.10	317.50	1-8
F	177.80	350.04	1-8



4 bolt flange

Flange size acc. to SAE	Dimensions [mm]		
	$\varnothing E$	$\varnothing F$	G
AA	45.24	72.09	5/16-18
AA	82.55	104.78	3/8-16
B	101.60	127.00	1/2-13
C	127.00	161.93	5/8-11
D	152.40	228.60	3/4-10
E	165.10	317.50	1-8
F	177.80	350.04	1-8



Dimensions

SAE housing size	Number of bores	Plate thickness		SAE centring pump Ø		
		mm	inch		mm	inch
#1	2-Bolt	19.05 mm	.75"	SAE "C"	127.0 mm	5.00"
#1	4-Bolt	19.05 mm	.75"	SAE "C"	127.0 mm	5.00"
#1	2 and 4 Bolt	19.05 mm	.75"	SAE "C"	127.0 mm	5.00"
#1	2-Bolt	19.05 mm	.75"	SAE "D"	152.4 mm	6.00"
#1	4-Bolt	19.05 mm	.75"	SAE "D"	152.4 mm	6.00"
#1	2 and 4 Bolt	19.05 mm	.75"	SAE "D"	152.4 mm	6.00"
#1	2-Bolt	19.05 mm	.75"	SAE "E"	165.1 mm	6.50"
#1	4-Bolt	19.05 mm	.75"	SAE "E"	165.1 mm	6.50"
#1	2-Bolt	19.05 mm	.75"	SAE "F"	177.8 mm	7.00"
#1	4-Bolt	19.05 mm	.75"	SAE "F"	177.8 mm	7.00"
#2	2-Bolt	19.05 mm	.75"	SAE "C"	127.0 mm	5.00"
#2	4-Bolt	19.05 mm	.75"	SAE "C"	127.0 mm	5.00"
#2	2 and 4 Bolt	19.05 mm	.75"	SAE "C"	127.0 mm	5.00"
#2	2-Bolt	19.05 mm	.75"	SAE "D"	152.4 mm	6.00"
#2	4-Bolt	19.05 mm	.75"	SAE "D"	152.4 mm	6.00"
#2	2 and 4 Bolt	19.05 mm	.75"	SAE "D"	152.4 mm	6.00"
#2	2-Bolt	19.05 mm	.75"	SAE "E"	165.1 mm	6.50"
#2	4-Bolt	19.05 mm	.75"	SAE "E"	165.1 mm	6.50"
#3	2-Bolt	12.7 mm	.50"	SAE "B"	101.6 mm	4.00"
#3	4-Bolt	12.7 mm	.50"	SAE "B"	101.6 mm	4.00"
#3	2 and 4 Bolt	12.7 mm	.50"	SAE "B"	101.6 mm	4.00"
#3	2-Bolt	12.7 mm	.50"	SAE "C"	127.0 mm	5.00"
#3	4-Bolt	12.7 mm	.50"	SAE "C"	127.0 mm	5.00"
#3	2 and 4 Bolt	12.7 mm	.50"	SAE "C"	127.0 mm	5.00"
#3	2-Bolt	12.7 mm	.50"	SAE "D"	152.4 mm	6.00"
#3	4-Bolt	12.7 mm	.50"	SAE "D"	152.4 mm	6.00"
#3	2 and 4 Bolt	12.7 mm	.50"	SAE "D"	152.4 mm	6.00"
#4	2-Bolt	12.7 mm	.50"	SAE "A"	82.55 mm	3.25"
#4	4-Bolt	12.7 mm	.50"	SAE "A"	82.55 mm	3.25"
#4	2 and 4 Bolt	12.7 mm	.50"	SAE "A"	82.55 mm	3.25"
#4	2-Bolt	12.7 mm	.50"	SAE "B"	101.6 mm	4.00"
#4	4-Bolt	12.7 mm	.50"	SAE "B"	101.6 mm	4.00"
#4	2 and 4 Bolt	12.7 mm	.50"	SAE "B"	101.6 mm	4.00"
#4	2-Bolt	12.7 mm	.50"	SAE "C"	127.0 mm	5.00"
#4	4-Bolt	12.7 mm	.50"	SAE "C"	127.0 mm	5.00"
#4	2 and 4 Bolt	12.7 mm	.50"	SAE "C"	127.0 mm	5.00"
#5	2-Bolt	12.7 mm	.50"	SAE "A"	82.55 mm	3.25"
#5	4-Bolt	12.7 mm	.50"	SAE "A"	82.55 mm	3.25"
#5	2 and 4 Bolt	12.7 mm	.50"	SAE "A"	82.55 mm	3.25"
#5	4-Bolt	12.7 mm	.50"	SAE "B"	101.6 mm	4.00"
#5	2 and 4 Bolt	12.7 mm	.50"	SAE "B"	101.6 mm	4.00"
#5	2 and 4 Bolt	12.7 mm	.50"	SAE "C"	127.0 mm	5.00"
#5	4-Bolt	12.7 mm	.50"	SAE "C"	127.0 mm	5.00"
#5	2 and 4 Bolt	12.7 mm	.50"	SAE "C"	127.0 mm	5.00"
#6	2-Bolt	12.7 mm	.50"	SAE "A"	82.55 mm	3.25"
#6	4-Bolt	12.7 mm	.50"	SAE "A"	82.55 mm	3.25"
#6	2 and 4 Bolt	12.7 mm	.50"	SAE "A"	82.55 mm	3.25"
#6	2-Bolt	12.7 mm	.50"	SAE "B"	101.6 mm	4.00"
#6	4-Bolt	12.7 mm	.50"	SAE "B"	101.6 mm	4.00"
#6	2 and 4 Bolt	12.7 mm	.50"	SAE "B"	101.6 mm	4.00"
#6	2-Bolt	12.7 mm	.50"	SAE "C"	127.0 mm	5.00"
#6	4-Bolt	12.7 mm	.50"	SAE "C"	127.0 mm	5.00"
#6	2 and 4 Bolt	12.7 mm	.50"	SAE "C"	127.0 mm	5.00"

Online catalogue



epaper.hbe-hydraulics.com/en

HBE hydraulic
components

HBE GmbH
Hönnestraße 47
58809 Neuenrade / Germany
Phone +49 (0) 23 94 / 616-0
info@hbe-hydraulics.com
hbe-hydraulics.com



A company of
e.holding
FLUID TECHNOLOGY GROUP